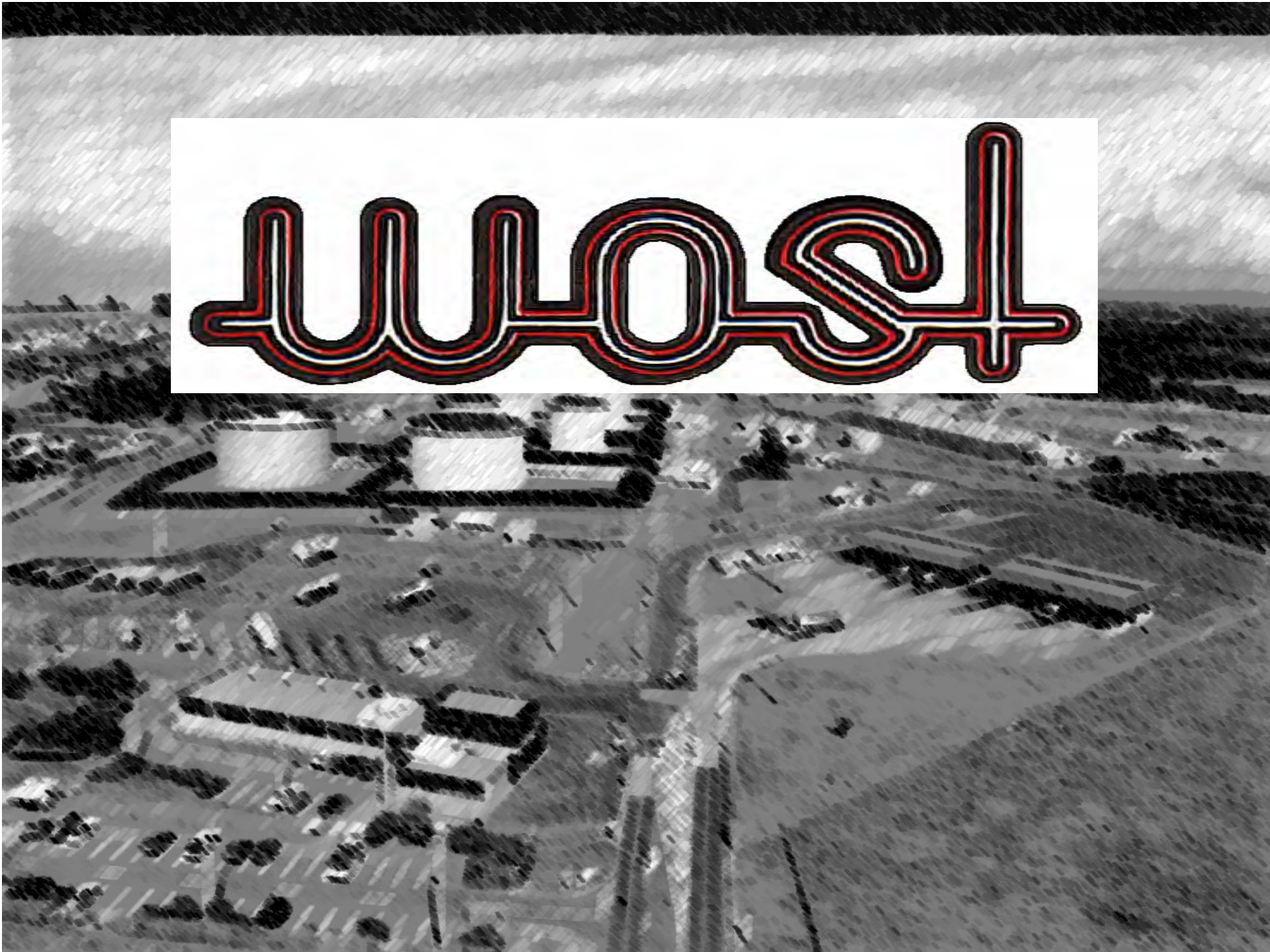


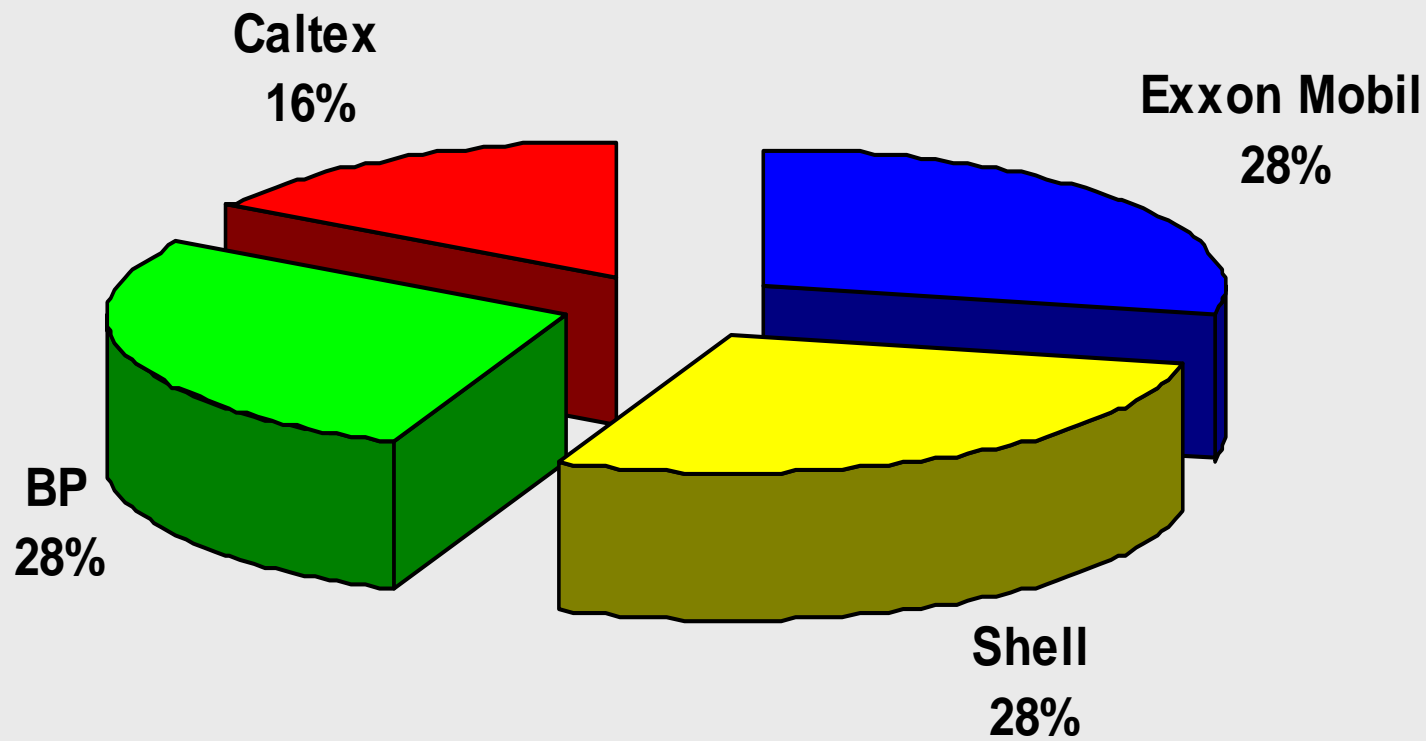
Wool



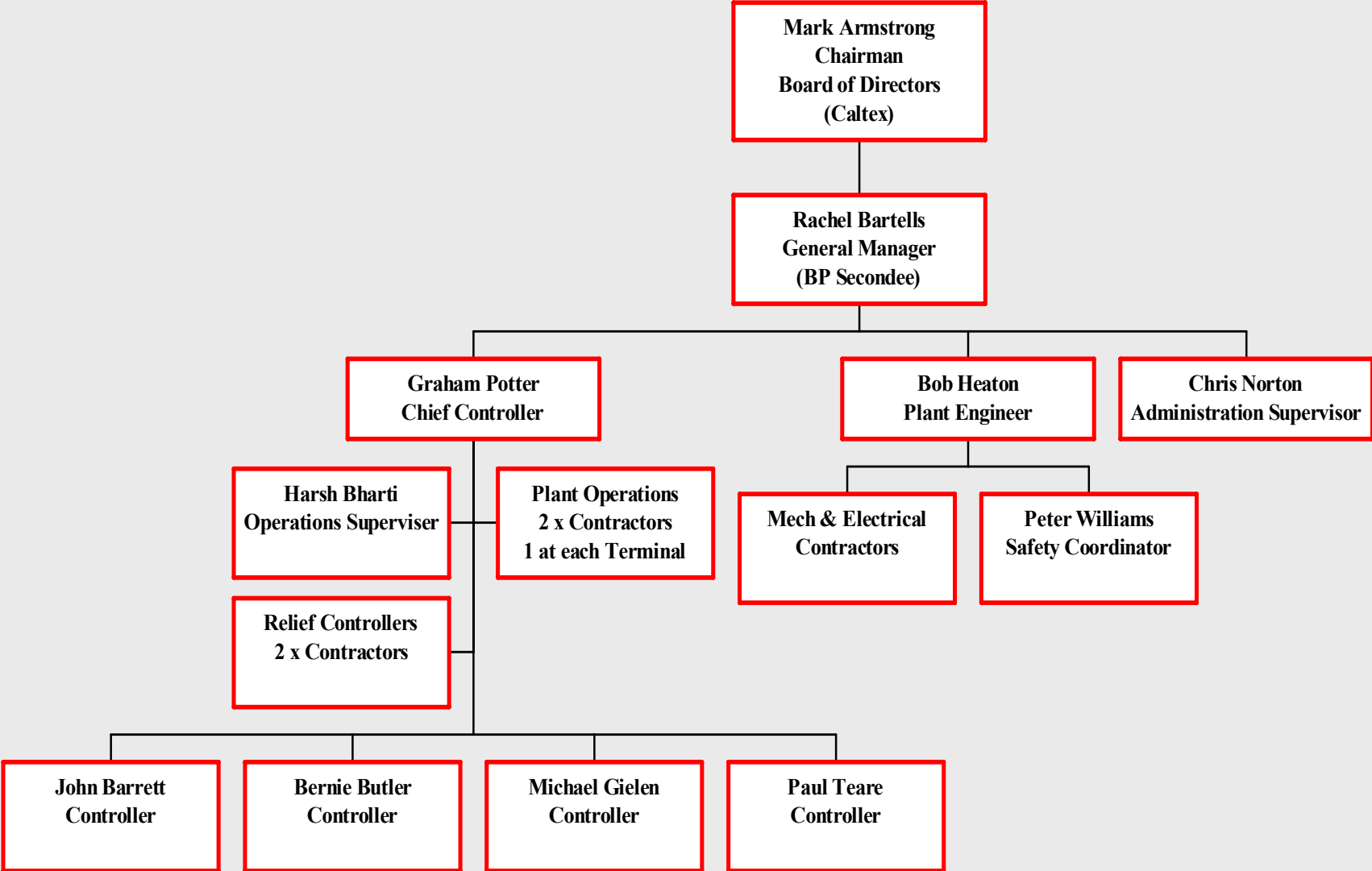
What Is WOSL?

- WOSL is a Limited Liability Company
- Operates as an Independent Company
- Established in 1985
- 4 Shareholders
- 2 Terminals
- 15 full time personnel
 - 1 Manager - 3 year secondee
 - 9 permanent staff
 - 5 full time contractors
 - 4 - Wiri. Ops, Mech, Elect, Yard Supervisor
 - 1 - MPT. Ops/Maint
 - Plus Contractors, etc as reqd

WOSL Shareholders



Wiri Oil Services Ltd



Primary Focus for WOSL

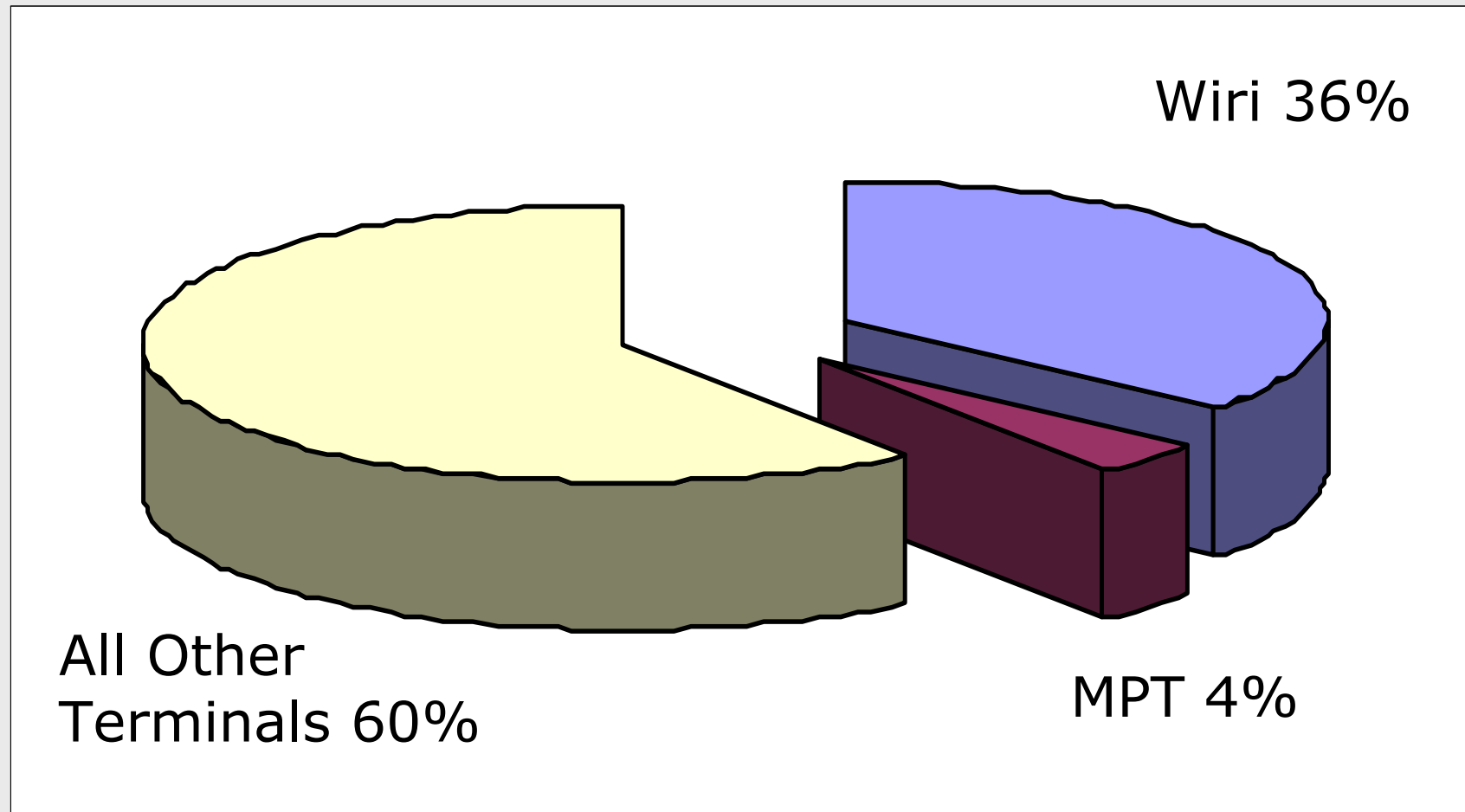
■ Shareholder Expectations

- Quality Products
- Efficient Operation
- Safety Excellence
- Overall BIC Performance

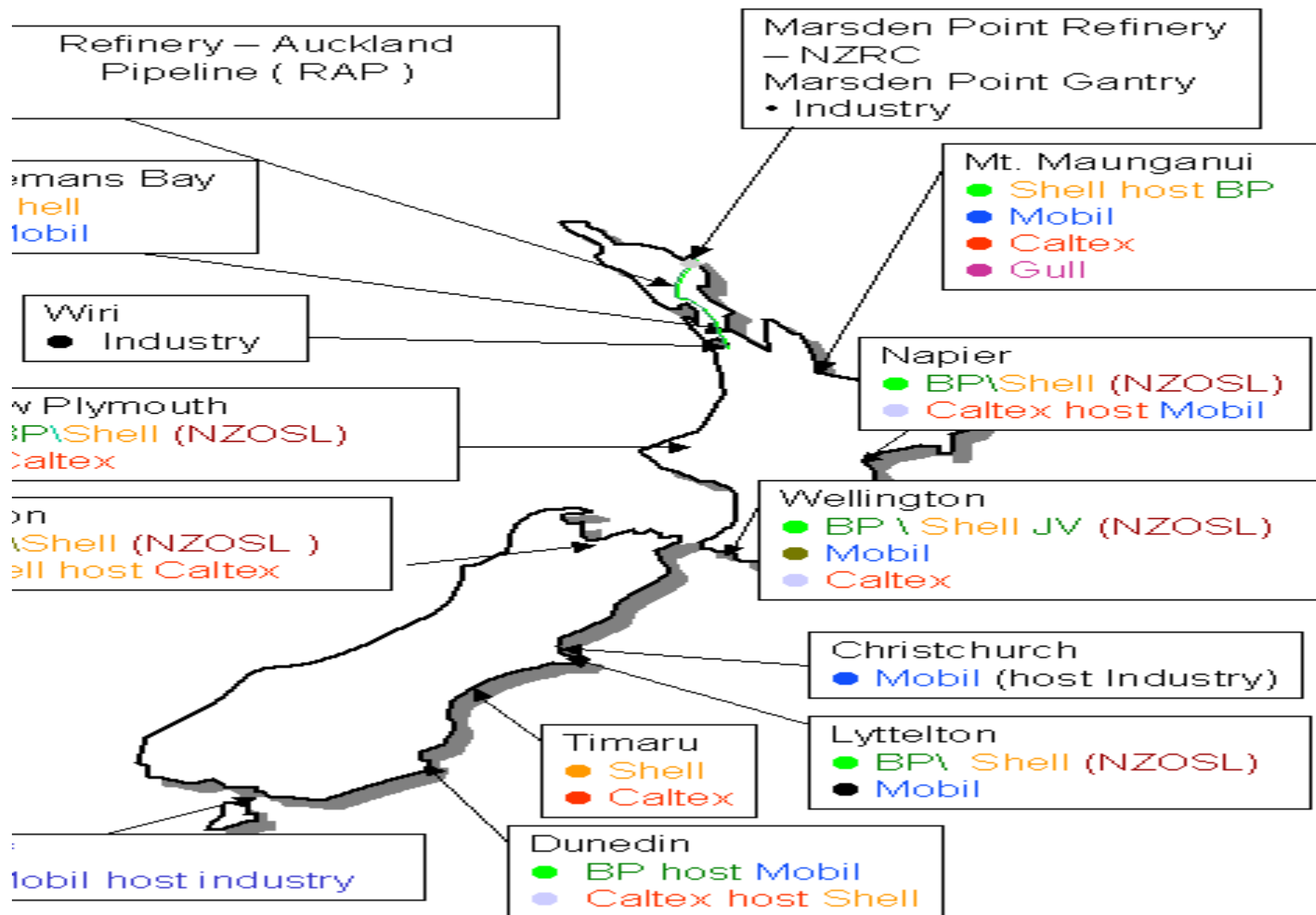
■ Operational

- Bulk storage
- Custodial stock responsibilities
- Truck loading facilities
- WAP Control
- Operational standards & compliance

NZ Oil Industry Volumes



New Zealand Terminal Network 2002



Wiri Terminal (Est 1985)



Marsden Point Terminal (Est 1998)



Tank Profiles

■ Wiri

- 2 20mltrs Reg (Flt)
- 2 8mltrs Prem (Flt)
- 2 12mltrs Adf (Fx)
- 3 12mltrs Jet (Fx)

■ Marsden Point

- 2 1mltrs Reg (Fx)
- 2 1mltrs Prem (Fx)
- 2 1mltrs Adf (Fx)

Target Stock Holding 55 – 70 mltrs

API 653 Compliance Policy

Refinery – Auckland Pipeline

- 169km x 10"-9200m³
- 3 Pumping stations
- 4 Product pipeline
- 380m³/hour average
 - ADF 360m³/hour
 - Jet A-1 380m³/hour
 - Premium96 405m³/hour
 - Regular91 410m³/hour
- NZRC Control - WOSL Monitor
- SCADA/Leak detection/etc



Wiri - Airport Pipeline

- 6.9kms x 6" -150m³
- Jet A-1 fuel only
- 1039 mltrs 2005
- 160 m³ p/hour - 1340 mlts pa
- WOSL Control
- SCADA + dynamic leak detection



Truck Loading Control

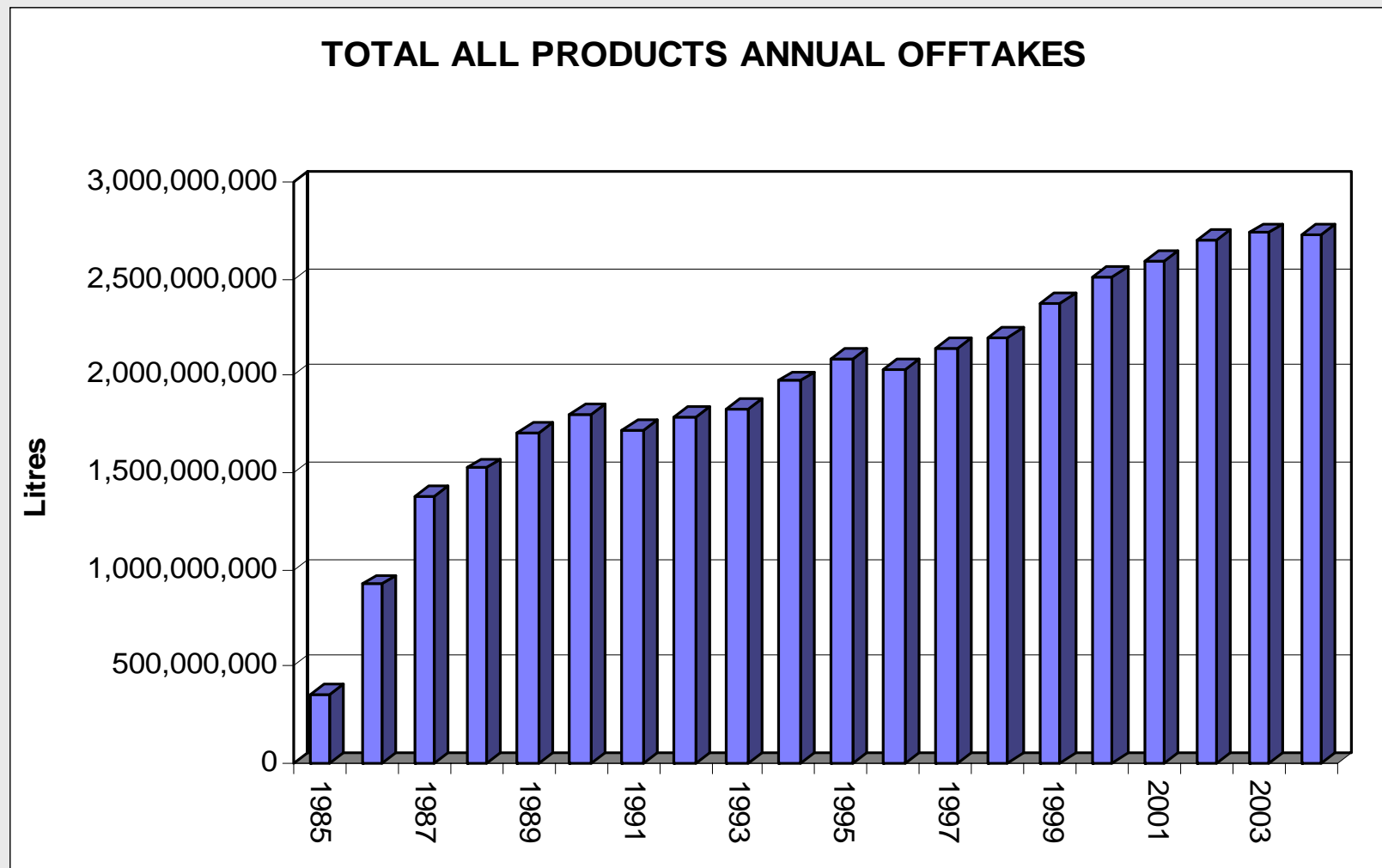


- MPT & Wiri 24hr
- Full Induction
- Wiri - 7 bays 21 arms - BLC80
- MPT - 2 bays 8 arms - BLC100
- 150 Trucks p/day
- Omega
TAS/Stock/Security
Control

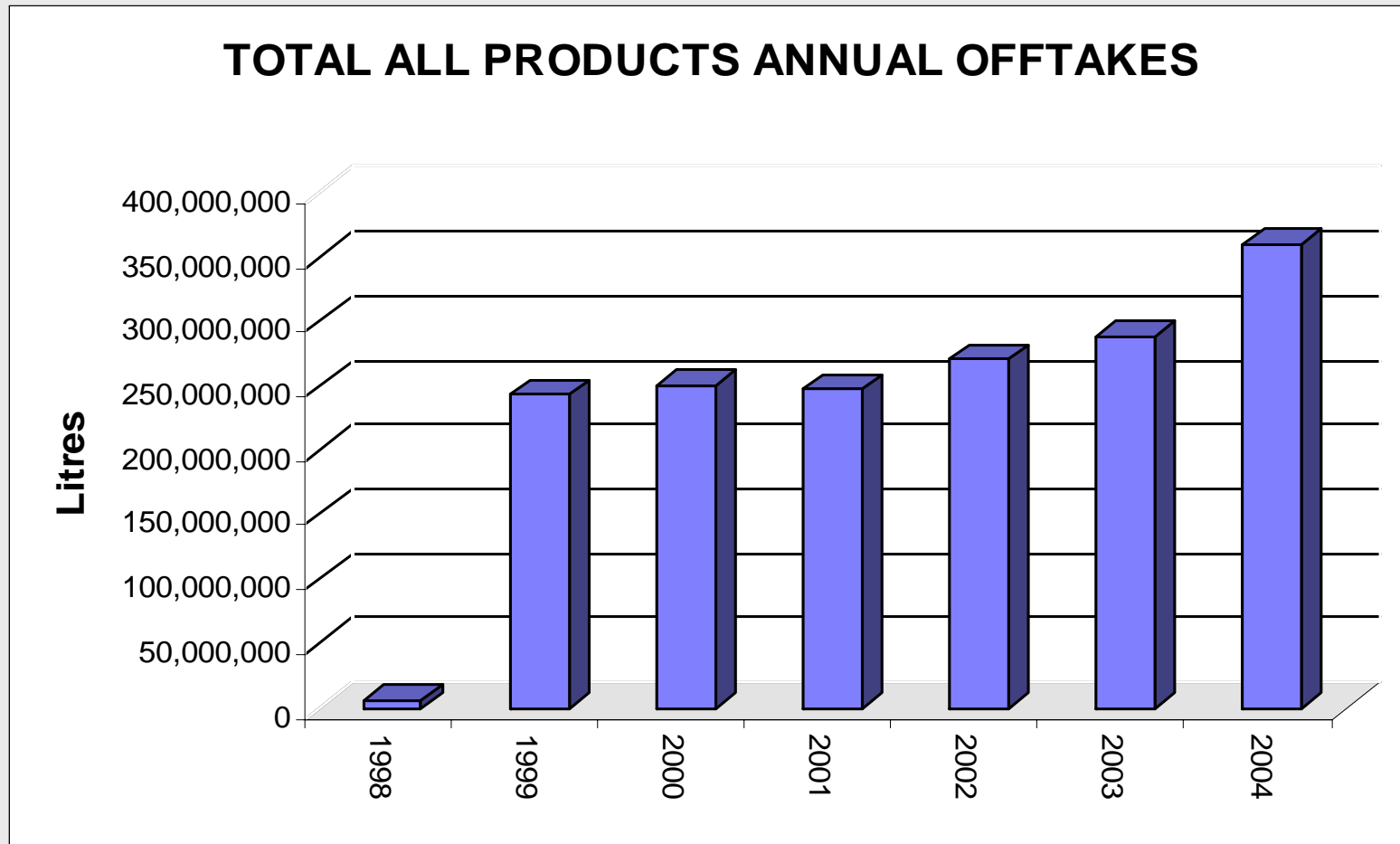
Year 2004 Throughputs

■	Wiri million litres	MPT
■ Premium96	221	35
■ Regular91	882	152
■ Diesel	553	172
■ Jet A-1	1074	
■ Total	2729	360
■	Wiri became restrained by RAP capacity. IPS1/2 & IPS2 have addressed that	
■	Use of DRA in RAP is being studied to get greater capacity	

Wiri Offtake Trends



MPT Offtake Trends



Quality Assurance

- ISO 9001:2000 registered supplier
- Maintain own QA systems
- Aviation (Jet A-1 only)
 - JIG (Joint Industry Group)
 - Civil Aviation Authority of New Zealand
- Authorisation to Supply Aeronautical Products (S3 - fluids)

Land and Asset Ownership

■ **Wiri**

- Land owned by shareholders
- Land is leased to NZRC
- NZRC provided original assets on land
- NZRC lease back land & assets to shareholders
- WOSL manage site
- Any new assets shareholders fund

Land and Asset Ownership

- **TLF**
- Land owned by NZRC
- Leased to shareholders
- Shareholders provided assets
- WOSL manage

WOSL Future.....

- Continue to deliver expectations
- Drive to exceed expectations
- Flexible with evolving strategies
- Raise BIC ranking >top 5%
- Identify new opportunities

Wool

