



GROUP STEERING COMMITTEE AGENDA

Notice is hereby given of an ordinary meeting of the Lifelines Group Steering Committee, to be held at the offices of the Waikato District Council, 15 Galileo Street, Ngaruawahia at 10.00 am on Friday, 11 November 2011.

MEMBERS:

- WEL Networks**
Alan Harrop
- South Waikato District Council**
Howard Mitchell
- Waikato District Council**
Steven May
- New Zealand Transport Agency**
Brian Grey
- Environment Waikato**
Adam Munro
- Waipa District Council**
Lorraine Kendrick
- Genesis Energy**
Bill Ashurst (Chairperson)
- Ministry of Civil Defence Emergency Management**
Suzanne Vowles
- Vodafone**
Peter Carr

IN ATTENDANCE:

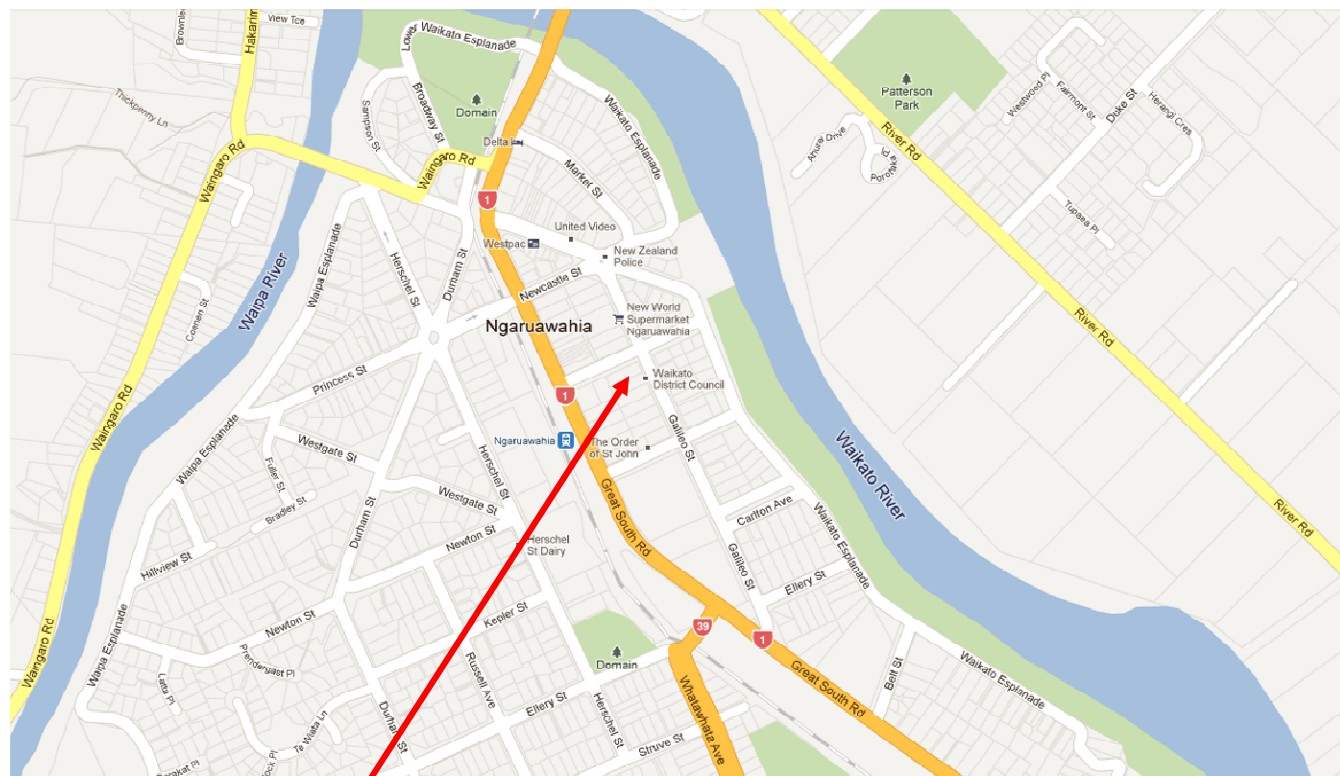
- Project Manager**
John Harris

APOLOGIES:

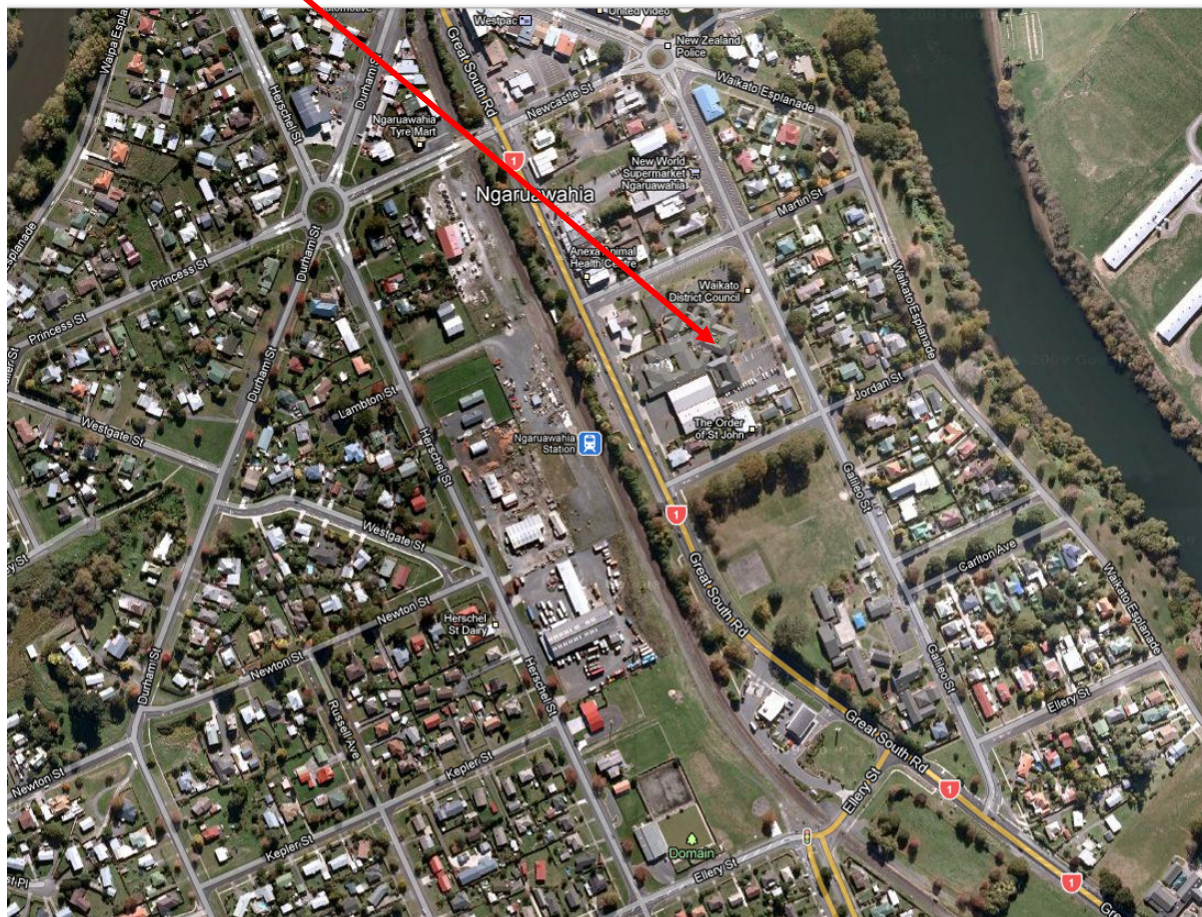
Future Meeting Dates:

Friday 11 November 2011
Friday 24 February 2012
Friday 22 June 2012

Ordinary meeting
Ordinary meeting
Ordinary meeting



Waikato District Council



- 1 Apologies**
- 2 Introductions**
Brief introduction by attendees
- 3 Presentation**
“Christchurch infrastructure recovery” presentation by Sarah Laurence (Opus International Consultants Ltd) on the issues, in terms of the recovery phase, of Christchurch’s lifeline utilities, with an emphasis on wastewater systems, and construction methods being utilised, including different methods of procurement.
- 4 Late items for General Business**
- 5 Minutes of Previous Meeting**
- 6 Correspondence**
Inwards and outwards correspondence
- 7 Project Managers Report**
Report on activities since the previous meeting and an update on the Waikato Engineering Lifeline Group’s Projects, including an analysis of the Annual Seminar satisfaction survey
- 8 Members Updates**
Verbal reports on issues relating to their respective utility sectors
- 9 CDEM Group Update**
Update on the CDEMG issues/activities/initiatives and the EMIS project
- 10 Climate change and Pandemic update and other items of interest**
General update on climate change, pandemic & other items of interest
- 11 National Lifelines Forum**
Verbal report on outcomes from the Forum, held in Christchurch
- 12 General Business**
- 13 Next Meeting**

Report to Lifelines Group Steering Committee

Date: 20 October 2011
To: Steering Committee Members
From: Lifelines Project Manager
Subject: **Project Manager's Report**

Purpose

To report on the Project Manager's activities and an update of projects since the previous report dated 3 March 2011.

Activities

- General Administration and keeping up to date with lifeline related information.
- General correspondence relating to the Waikato Engineering Lifelines Group
- Preparation of Steering Committee Meeting minutes and agendas
- Annual Seminar and AGM
- Fine-tuning of the Utility Vulnerability Map to obtain relevant information
- Development of the Utility Vulnerability Assessment & Prioritisation booklet
- On-going involvement with Emergency Communications Plan
- Assisting in provision of information on the Mass Evacuation Plan currently being developed for the Waikato CDEMG.

WELG Expenditure:

An expenditure spreadsheet outlining 2011/2012 expenditure to date will be presented at the meeting.

Communications Plan

This is a project constantly under review and is totally reliant on the respective utilities keeping the WELG Project Manager informed of any changes to emergency contact details.

Regional Climate Change Impact Project

As indicated at previous meetings, no further work will be carried out on this project until critical sites have been identified and the effects of climate change on the sites will form part of the risk assessment process.

Pandemic

The Group continues with the dissemination of information on the potential Avian Flu Pandemic, predominately through individual contacts and Steering Group Meetings. The Project Manager is a member of the Pandemic working party and thus provides a vehicle for information to pass to and from the utilities.

Utility Vulnerability Assessment & Prioritisation Project

Although not all information has been received, particularly the tabular information, the Utility Vulnerability Map has been completed and a grid analysis has been developed to identify potential critical sites where two or more utility networks coincide within a 50 metre grid.

Fuel Supply Project

I have located further information on fuel stations in the Waikato Region that have been set up to operate with a generator during power outages and will expand on this at the meeting. I will also be raising the question again at the National Forum.

Alternate Routes Project

This project is being developed simultaneously with the Utility Vulnerability and Fuel Supply Projects. It is also a key factor in the current development of a Mass Evacuation Plan for the Waikato CDEMG.

Business Plan

The 2007 – 2012 Business Plan was completed and signed off in October 2007 and it should be noted that while potential future projects have been identified, priorities change and the WELG should keep abreast of issues in order to provide maximum benefit to both the CDEM Group and the Utility Companies/Agencies.

Annual Seminar

The Seminar was held at the Hamilton Airport due to its central location and ease of access, especially for presenters. The original Seminar theme was the Rugby World Cup and potential issues for emergency management in the event of a National Emergency at the same time but was dropped as a result of the Christchurch earthquake in February. The theme became the Christchurch earthquake and we were fortunate in having excellent speakers, although one speaker was unable to come due the earthquake. We were extremely fortunate to have a backup presenter who outlined his involvement in the Pike River Mining disaster and, while this was not directly related to Christchurch, did relate to the necessity of communications during any event.

Waikato & Bay of Plenty Lifelines Groups 2011 Combined Annual Seminar							
Hamilton International Airport Motor Inn & Conference Centre on Friday 1 July 2011							
Performance ratings from 1 to 5 with 1 being poor and 5 being excellent							
Ranking	1	2	3	4	5	Comments	Total
Breakfast	0	0	2	18	22	food well presented, room to move excellent (2) great selection	42
Pike River Coal mine Disaster Nick Thompson	0	0	1	21	28	good talk & presentation very interesting presentation some good take outs - very applicable valuable presentation	50
Christchurch Earthquake ACD Perspective John Hamilton	0	1	4	22	23	national observations / perspectives helpful nothing like experience (real) well pitched, very strategic good presentation	50

Launch of Vulnerability Map Andrew Standley	0	4	19	20	3	useful tool - potential to overlay great insight into emerging technology good scheme	46
Lunch	0	0	6	25	14	more salads / fruit juice need fresh fruit	45
NZ Seismic Hazard Model Martin Reyners	1	0	7	22	16	hard to follow - too scientific - couldn't see slide wording interesting info good to share your science so we understand very technical but good insights into process difficult to comprehend excellent presentation good presentation but PowerPoint colours almost illegible on screen A technical topic well presented too technical - power point colours not visible	46
Panel Discussion	0	0	5	20	5	needed microphone a plus have a few planted questions up your sleeve great to be able to access quality speakers	30
Venue	0	0	4	25	17	insufficient parking	46
Seminar	0	0	2	24	17	very suitable without being over the top more water on tables technology could be better	43
Date	OK	Not OK	Time	OK	Not OK	would prefer to avoid Mondays & Fridays Have only 1/2 hour for lunch - more time for presenters	38
	19	1		18	0		

In terms of the arrangement with Bay of Plenty Lifelines Group, the joint 2012 Annual Seminar is being held in the Bay of Plenty Region

Recommendation:

- (1) That the report titled “**Project Manager’s Report**” be received for information.

John Harris

Lifelines Project Manager

Report to Lifelines Group Steering Committee

Date: 20 October 2011
To: Steering Committee Members
From: Lifelines Project Manager
Subject: **Climate change and Pandemic update and other items of interest.**

Purpose

To provide a general update on climate change, pandemic & other items of interest

NOTE: Control + click on blue underlined or orange references to follow the link for more detailed information and maps.

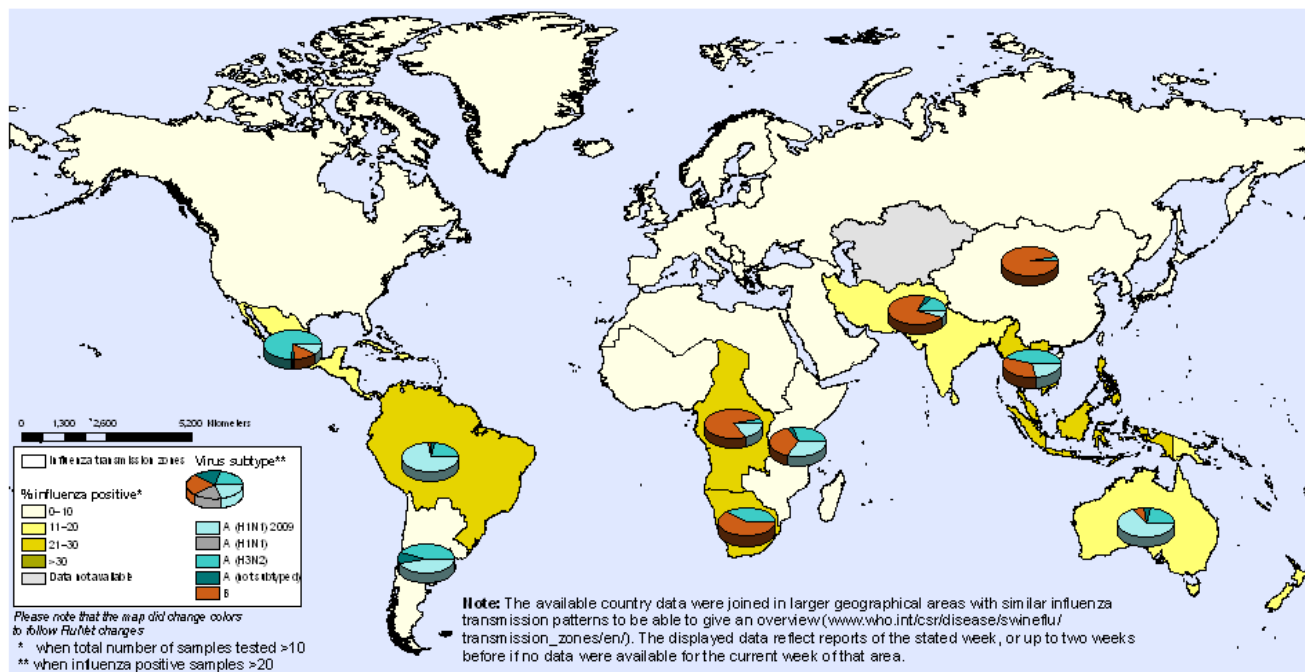
Climate change publications

<http://www.mfe.govt.nz/publications/climate/>

Avian influenza

Percentage of respiratory specimens that tested positive for influenza By influenza transmission zones

Status as of week 38
2 – 8 October 2011



The boundaries and names shown and the designations used on this map do not imply the expression of any opinion whatsoever on the part of the World Health Organization concerning the legal status of any country, territory, city or area or of its authorities, or concerning the delimitation of its frontiers or boundaries. Dotted lines on maps represent approximate border lines for which there may not yet be full agreement.

Data Source: WHO/GIP, data in HQ as of 3 October 2011. Data used are from FluNet (www.who.int/flu-net), 11:05 UTC snapshot, from WHO regional offices and/or ministry of health websites.

 World Health Organization
©WHO 2011. All rights reserved.

Situation in Indonesia - update 6

10 October 2011 -The Ministry of Health of Indonesia has announced a confirmed case of human infection with avian influenza A(H5N1) virus.

The case is a 1-year old female from West Jakarta district, DKI Jakarta Province. She developed symptoms and was treated at a health care facility on 8 August, and first admitted to a private hospital on 15 August. She died on 25 August.

A family member in the case's household worked as a caterer, frequently processing poultry product, including slaughtering. There were also poultry in the neighbourhood but there were no reports of chicken deaths within the last 14 days.

Laboratory tests have confirmed infection with avian influenza A(H5N1) virus.

Of the 179 cases confirmed to date in Indonesia, 147 have been fatal.

EMIS Update

Unable to access the MCDem EMIS website at this time through the links below but apparently it is currently off line. I have, however, arranged for Ainsley Alexander to update the members at the meeting.

Visit the [EMIS Project](http://www.emis.govt.nz) website for the most up to date timeline.

www.emis.govt.nz

Gerry Brownlee, Nick Smith

7 October, 2011

Changes proposed to RMA following earthquake report

A report into approvals of subdivisions in Christchurch and Kaiapoi badly affected by Canterbury's earthquakes has resulted in the Government proposing changes to the Resource Management Act to better manage the risk of natural hazards.

The fact finding report by consultants Hill Young Cooper and Resource Management Group Limited released today investigated the planning and resource consenting history in Christchurch's eastern suburbs and Kaiapoi from 1977. It found the majority of these areas were zoned for residential development in the 1960s and 1970s but that significant areas were consented for subdivision after 1991 when the liquefaction risk in these areas was clearly identified.

"The RMA didn't work and needs fixing," Dr Smith said. "The concern is that reports in 1991 identified these areas as highly susceptible to liquefaction, yet consents for subdivisions were granted without any consideration of these risks. About a fifth of the areas badly affected by liquefaction in earthquakes over the last year were consented after this time. The problem is the RMA did not – and still does not – require these sorts of risks to be assessed and managed.

"This reflects the priorities in the RMA of preserving natural character, landscape, flora and fauna, public access, cultural values and heritage over managing natural hazards. The Government intends to amend the RMA to give greater weight to managing the risks of natural hazards like earthquakes."

"New Zealand is a geologically young country with significant risks from earthquakes, volcanoes and floods. We need to learn from this report and ensure those hazards are specifically taken into account in future planning decisions. Keeping risks to a minimum will also help keep insurance cover accessible to New Zealanders," Mr Brownlee said.

"These important changes will feed into the Government's broader, second phase of changes to the RMA planned for next year. A Technical Advisory Group led by barrister Alan Dormer will report back to Government by March 2012 on detailed proposals," Dr Smith said.

The Canterbury Fact Finding report can be found at: www.mfe.govt.nz/issues/canterbury-earthquakes/index.html

MfE [Transport](#)

- [Environmental effects](#): Transport generates a number of adverse environmental effects from both transport infrastructure and vehicles.
- [Sustainable transport](#): Sustainable transport is about finding ways to move people, goods and information in ways that reduce its impact on the environment, the economy, and society.
- [Transport management](#): The roles and responsibilities of the various government agencies involved in transport management and related legislation.

[Resource Management Act](#) > [Improving and implementing the RMA](#) > [National policy statements](#)

National Policy Statement for Renewable Electricity Generation

This page provides information on the National Policy Statement for Renewable Electricity Generation (NPS REG) gazetted on 14 April 2011.

The NPS REG is in effect from **13 May 2011**.

Important information for councils about the immediate effect of the NPS REG

From 13 May 2011, decision-makers on resource consent applications must have regard to the provisions of the NPS, regardless of when the application was lodged.

The NPS requires local authorities, unless they have already provided for renewable electricity generation activities, to give effect to its provisions by notifying changes to existing or proposed regional policy statements and plans by 13 May 2013.

- [Application of NPS REG to resource consent applications](#)
- [Amending plans to give effect to the NPS REG 2011](#)

Consultation on Proposed Regulations Restricting the Use of HFC-23 and N₂O CERs in the NZ ETS

Consultation document

Making a submission

Submissions are welcomed from parties who may be affected by the proposed change and from other interested people. The consultation questions at the end of this document are for guidance only, submissions on all aspects of the proposals are welcome.

The deadline for submissions is **5pm on Monday 31 October 2011**. Submissions can be emailed to climatechange@mfe.govt.nz, with 'HFC/CERs submission' in the subject line.

Submissions can also be posted to:

NZ Entity Submissions
Ministry for the Environment
PO Box 10362
Wellington 6143

This publication is not currently available as full HTML. However, [Consultation on Proposed Regulations Restricting the Use of HFC-23 and N₂O CERs in the NZ ETS](#) (165 KB) is available in PDF format. If you are unable to access this document please email webmaster@mfe.govt.nz and we will provide you with an alternative format.

We will publish the full HTML Consultation document by October 21, 2011.

Availability

- [Download PDF](#)
[\(507 KB\)](#)
- **No printed copies available**

Canterbury Fact Finding Project report

Hill Young Cooper and the Resource Management Group

The Ministry commissioned the Canterbury Fact Finding Project report to look at the information on liquefaction and lateral spreading hazards that was known, available and factored into the zoning and development process in parts of Canterbury that were severely impacted by liquefaction and lateral spreading.

The areas covered by the study, and the time period it relates to, are as follows:

- Eastern suburbs of Christchurch along the Avon River (1977 to 22 February 2011)
- Brooklands, Kaiapoi, and Kairaki/The Pines (1977 to 4 September 2010).

The report identifies that while there was known generic information on liquefaction and lateral spreading available during the study period, for most of the period under review specific information on liquefaction and lateral spreading risk was limited in its availability and was not specifically factored into zoning and consenting decisions.

The report (with some detailed map layers and interviewee lists removed) can be viewed in two documents:

- [Canterbury Fact Finding Project report](#) (PDF, 4.25 MB)
- [Canterbury Fact Finding Project report excluding appendices](#) (appendices contain maps and tables) (PDF, 160 KB)

This report has been prepared by independent consultants on behalf of the Minister for the Environment. Neither the Minister, the Ministry for the Environment nor the Crown accepts any responsibility or liability whatsoever (whether in contract, tort, equity or otherwise) for the accuracy of the contents of this report or any action taken by any person who chooses to rely on information contained in the report.

Changes to legislation in response to the Canterbury earthquakes

Changes to legislation have been made in response to the Canterbury earthquakes, including Orders in Council made under the CER Act 2011 and CERRA 2010.

Details about other changes to legislation in response to the earthquake can be found on [CERA's website](#).

Last updated: 7 October 2011

Road Incident Management Seminar 2012 – Early Notification

NZTA and Opus are jointly organising this Seminar to be held 5–7 March at the Novotel Hotel, Rotorua

Background

Incidents which affect the operation and availability of roads can have major impacts on road users, communities and the movement of goods and services with wide implications. Although these incidents are usually dealt with very effectively at the local level the public's expectations in managing the effects of such events are increasing with evermore demand for timely information and speed of action to restore access and travel movements. Over the years there have been lessons learnt and improvements made to managing these events. It is believed that there would be some value in sharing these so that others may obtain benefit in understanding the problems faced so that further improvements can be made for the benefit of the customers.

Seminar objective

To support and promote the transfer and exchange of best practice for managing incidents affecting roads in New Zealand. The seminar will provide a platform for the exchange of ideas, share approaches and the lessons learnt to further develop risk management and best practice. This will also provide for networking among those with similar challenges in the industry.

Who should attend?

There are many key stakeholders within the realm of Road Incident Management. Those who would particularly benefit from this seminar include:

- ☐ NZ Transport Agency
- ☐ Police
- ☐ Fire
- ☐ Consultants
- ☐ Contractors
- ☐ Regional councils
- ☐ District councils

- ☐ Insurance industry
- ☐ Civil Defence
- ☐ Motorist and heavy vehicle organisations (AA, RTA, HHA, Bus and Coach)

Possible Topics

- ☐ Crash Management
- ☐ Forecasting tools
- ☐ Communications
- ☐ Incident management systems
- ☐ Crash analysis
- ☐ CIMS protocols and currency
- ☐ Incident management tools
- ☐ Key stakeholder perspectives
- ☐ Road safety
- ☐ Response times and expectations
- ☐ Public interfaces
- ☐ Signage systems
- ☐ Case studies
- ☐ Network resilience
- ☐ Weather related incidents (snow, ice flooding)

You are invited to register your interest in attending the seminar by emailing chris.davies@opus.co.nz with "Interest in Attending" in the message line to receive notification when registrations are open.

Document consultation

There are no guidelines currently under consultation.

Upcoming consultation

Companion Animal Emergency Welfare Planning Guideline – The guideline has been developed by the National Animal Welfare Emergency Management Liaison Group (NAWEM) in collaboration with Group and local CDEM representatives and other organisations with an interest in animal welfare.

The purpose is to provide guidance to emergency management planners in the development, maintenance and review of a functional plan for companion animal emergency welfare. If you are interested in participating in the consultation process, please contact your CDEM Group Office Manager. For more information please contact Leonie.Waayer@dia.govt.nz

Coordinated Incident Management System (CIMS) – The CIMS Steering Committee met on 26 August to analyse submissions made on a draft version of a new CIMS book. Based on decisions made at that meeting, alterations will be made to the current draft, which will then be resubmitted to agencies for confirmation. Following the confirmation process, the final text will be submitted to ODESC for endorsement (approximately late October/early November).

Upcoming events

November 2011

- 1 Introduction to CDEM for New Controllers** course, Wellington

2 National Controllers Forum, Wellington

3-4 Public Information Manager Course, Wellington

10 Exercise Pacific Wave, international exercise

16-17 Planning for a Volcanic Crisis, short course delivered by GNS Science, University of Auckland & Massey University, Auckland

17 CEG Chair Forum, Wellington

21-22 North Island CDEM Conference, Auckland

December 2011

January 2012

26 MCDEM EMO induction visit to Wellington

February 2012

21-22 Exercise Writing & Management Course, Wellington

March 2012

12-16 Emergency Management Summer Institute, Massey University, Wellington

April 2012

May 2012

TBC MCDEM Courses, Auckland

Recommendation:

- (1) That the report titled "**Climate change and Pandemic update and other items of interest**" be received for information.