



National Lifelines Update

Dave Brunsdon

db@kestrel.co.nz

Waikato Engineering Lifelines Group
Seminar 30 June 2006

Overview

- **From the NELC** — key questions for Lifelines Groups to ask themselves
- **From the Guide to the National CDEM Plan - Lifeline Utility co-ordination for *Response & Recovery***
- **From MED** – outline of infrastructure reporting arrangements for pandemic

Key Questions to Ask (1)

1. What should the *activity focus* of Engineering Lifelines Groups be in the current environment to best reflect the respective interests of both the Lifeline Utility and CDEM sectors?
 - What do **Lifeline Utilities** want from an Engineering Lifelines Group in terms of outputs?
 - What does a **CDEM Group** want from an Engineering Lifelines Group in terms of outputs?
2. How to put practical boundaries around the limitations of the activities of an Engineering Lifelines Group with respect to *operational arrangements*?

The NZ Lifelines Engineering Process

Scope & Limitations

- Risk *reduction* (or mitigation) is the prime focus, plus education and encouragement around *readiness* activities
- Lifelines Groups typically have no specific role in *response* or *recovery* processes as currently designated
 - ie. Lifelines Engineering has a *planning* rather than *operational* focus

Key Questions to Ask (2)

- 3.** Are all the significant utilities *adequately* represented? Are all Lifeline Utilities *appropriately* represented on Engineering Lifelines Groups given the different strands of *strategic* and *operational* activities?
- 4.** Who should monitor progress by Lifeline Utilities in terms of their expectations under the Act, Director's Guideline, Best Practice Guide at CDEM Group level?
- 5.** How much effort should Lifeline Utilities and Lifelines Groups be putting into *Disaster Resilience Summaries*?

Recommended Focus for Lifelines Groups

Priority Utility Sites for Recovery

- **Getting clarity around priorities for service restoration – agreement prior to the event**
- **Identifying critical community and lifeline utility sites – in conjunction with CDEM**
- **AELG report available from www.aelg.org.nz**
- **All Lifelines Groups encouraged to undertake a Priority Utility Sites study**

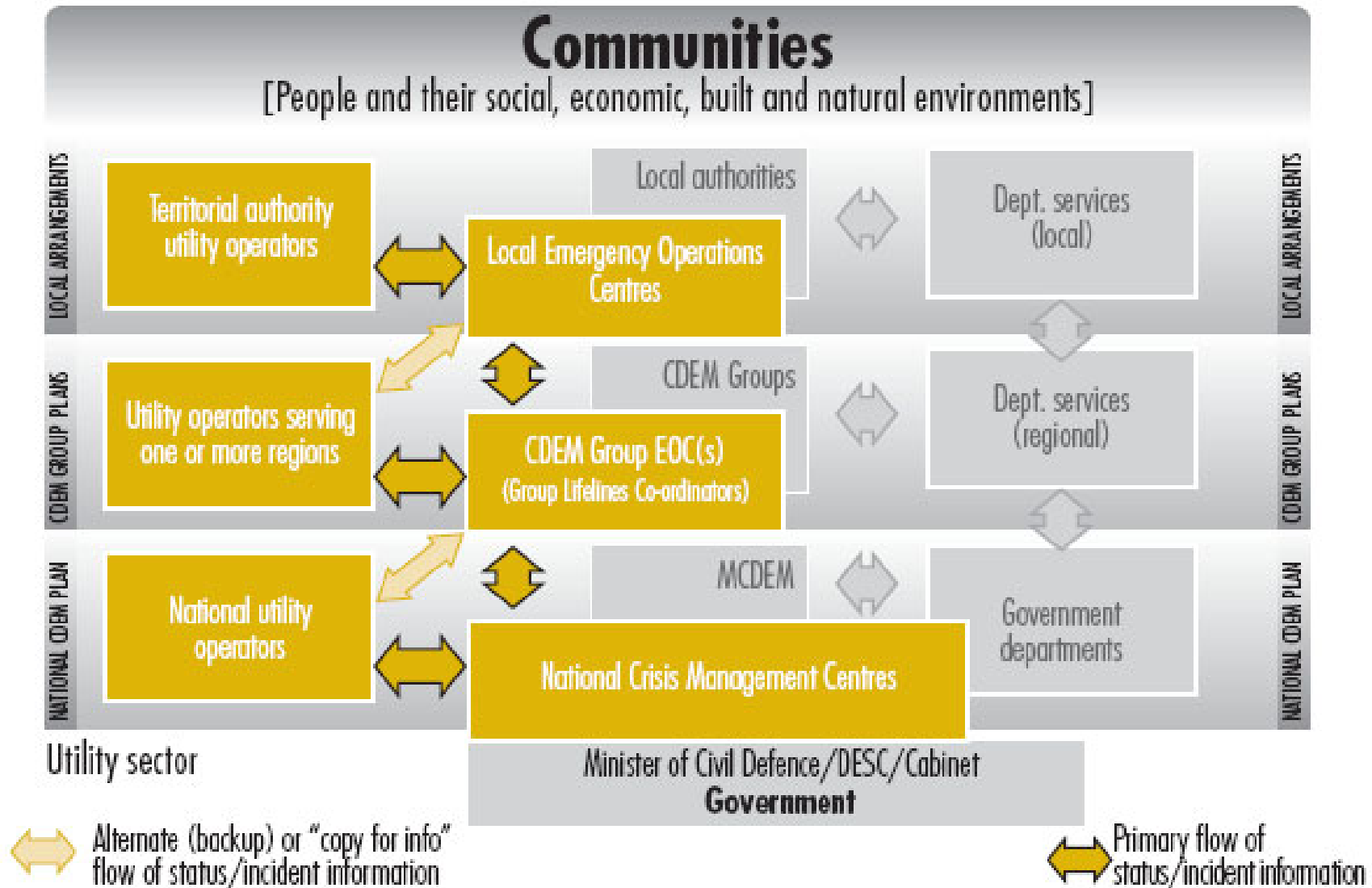
Lifelines Co-ordination: National CDEM Plan



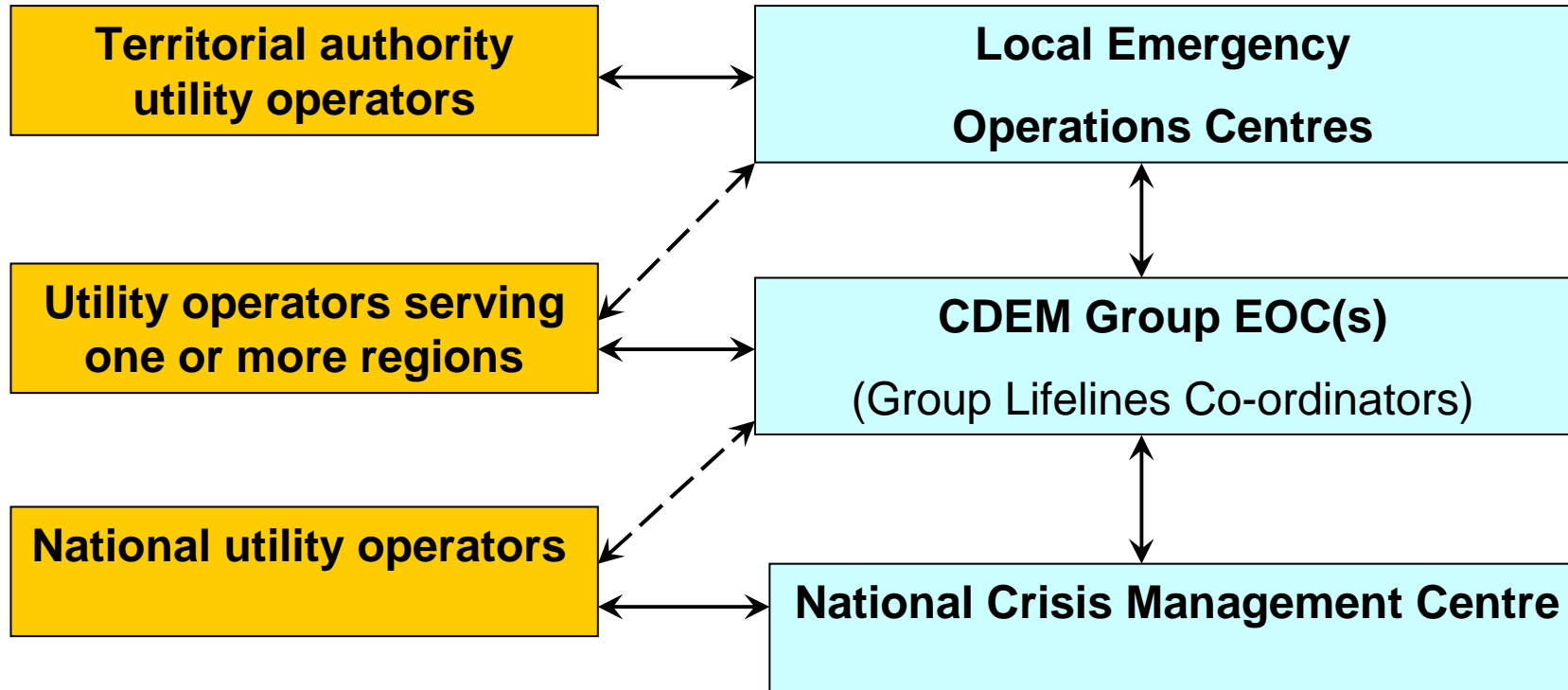
Section 34

- (2) **CDEM Groups** are primarily responsible for the co-ordination of local lifeline utilities across affected regions
- (3) **Lifeline utilities** are expected to co-ordinate at the national level as necessary using established sector mechanisms
- (4) **MCDEM** has responsibility for co-ordinating across lifeline utility sectors at the national level

Information Flows (Fig 10.1 of Guide)



Information Flows



Overview of Infrastructure Reporting for Pandemic



- 1. Focus of reporting**
- 2. Principles**
- 3. Process deliverables**
- 4. Steps still to be worked through**
- 5. Issues arising**

1. Focus of Reporting

- **On the capability to continue the delivery of services essential to economic activity and community wellbeing**
- **For pandemic, *Infrastructure* covers Energy, ICT, Transport, Water and Wastewater**

2. Principles

- **Using CDEM information management arrangements as much as possible**
 - Receiving and processing 'inwards' information; conveying 'outwards' the situation and issues that CDEM Groups and infrastructure providers need to know
 - Reporting linkages and mechanisms consistent with arrangements outlined in National CDEM Plan & Guide

3. Process Deliverables

- **Information**

- Keeping in active contact with infrastructure providers; managing proactive & reactive information flows

- **Analysis**

- Monitoring developments and identifying issues arising

- **Policy advice**

- To government in response to issues arising

- **Facilitation**

- Of solutions where cross-jurisdictional issues arise

4. Steps to be Worked Through

- **Finalising the most efficient and effective reporting systems for reporting under large scale pandemic**
- **Consulting with Infrastructure Providers (and other key sectors) on pandemic reporting requirements**

5. Issues Arising

- **The reporting linkages and mechanisms for Lifeline Utilities contained in the National CDEM Plan & Guide are new for many**
- **Limited resources of CDEM Group EOCs and infrastructure providers for regular reporting over sustained period**



National Lifelines Update

Dave Brunsdon
db@kestrel.co.nz